



**SD-SMP-SMA
PRIBADI BILINGUAL
BOARDING SCHOOL**



**Cambridge Assessment
International Education**

Cambridge International School



Middle and High School

ONLINE LEARNING *Guidelines*

Congratulation!



You've been an officially registered student at Pribadi School Bandung and have access to our online learning platforms such as Edunav, Pribadi LMS (Learning Management System), and also Latihan.id.

Using this guidelines, you'll need to dedicate the amount of time you need to reading and understanding our online learning system that allowing you to study on the go from your computer or laptop at home.

Rahmat Hidayat

Principal of SMA Pribadi Bandung

Background

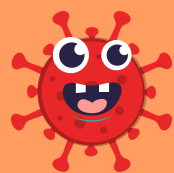
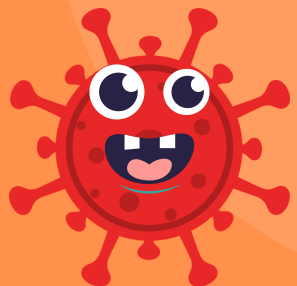
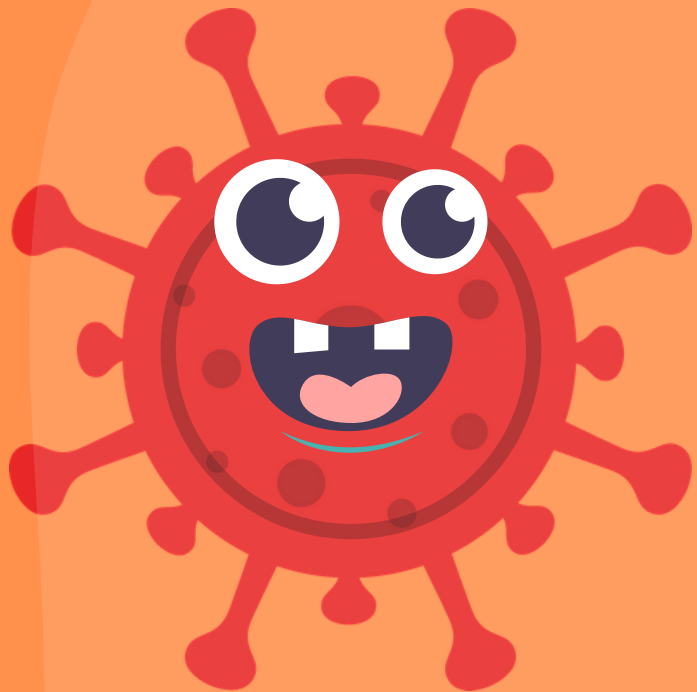
The Covid-19 pandemic has changed how millions of students around the globe are educated. New solutions for education could bring much needed innovation.

As global issue of the Covid-19 (Corona Virus) pandemic continues to spread, our priority is the safety and well being of teachers and the students. We are committed to supporting the education system through this rapidly changing situation.

All teachers and students are given access to elevate to facilitate distance learning and continue “classroom learning” at home. The teachers also preparing a series of face to face sessions (live & recorded).

Based on joint decisions of the Ministry of Education and Culture, Ministry of Religion, Ministry of Health, and Ministry of Home Affairs published on 15 June 2020, regions in the yellow, orange, and red zones of Covid-19 cases in Indonesia are prohibited from conducting face-to-face learning.

Hello there...
Human!



Online Learning at Pribadi School



How is online learning implemented in Pribadi School Bandung?

Pribadi School Bandung uses a combination of **virtual live, video-based sessions with the students** as the discussion forums and interactive question-and-answer sessions to give the students interaction with the teachers as well as with other students and **semi synchronous online learning** through our learning management system.

Online learning will be carried out in accordance with the progress of the pandemic conditions by following the directions of the education office.



About Virtual Class Room Session

Pribadi school facilitating live, video-based sessions with the students. Although some of the students may be new to virtual instruction, they'll discover it has the same goal as face-to-face learning: for students to engage with the material and interact with the teachers, their classmates, and the subject matter.

Like in the traditional classroom, the teacher's role as an instructor is what makes virtual courses impactful and special.



The Platforms

Online learning organized by Pribadi School uses the following platforms:

1. Edunav

This platform accommodates students information (Student's ID, attendance, grade book, report card)

2. Pribadi LMS (Learning Management System)

This platform accommodates learning materials and online teaching process

3. Latihan.id

This platform accommodates examinations (midterm and final exam)



1. EDUNAV

Pribadi Bandung SEMESTER 2 - 2019/2020 TEACHER EN 49

Dashboard Courses Gradebook Students Passport Lesson Plans Calendar Schedule Attendance EASE Reports Clubs Registration eForms

Gradebook Biology 10C

Dashboard / Courses / Biology / Gradebook

- Decimal Point is with dot (.) not with coma (,). For example: 80.3, 90.2
- Click **Quick Add** button to add more assessment.
- Double click the **Assessment Name** to edit assessment.
- **You CAN copy paste from Excel**

< Course Quick Add Download

	Unit Test 1; Respirator System (Unit Test)	Unit Test 2; Immune & Cardiovascular System (Unit Test)	Unit Test 3; Ecology Through Edpuzzle (Unit Test)	Unit Test 4; Miniquiz of Habitat Destruction in Edpuzzle (Unit Test)	Unit Test 5; Human Impacts to The Environment (Unit Test)	Unit Test 6; PISA test sample (Unit Test)	Participation 1 (Participation)	Participation 2; Online participation (Participation)	Home Work 1; Notebook Respirator System (Home Work)	Home Work 2; Worksheet Respirator System (Home Work)	Home Work 3; Mindmap Cardiovascular System (Home Work)	Home Work 4; Mindmap Immune System (Home Work)
--	--	---	---	--	---	---	---------------------------------	---	---	--	--	--

Edunav is a school information system that contains student attendance, lesson schedules, discipline record, grade book and report card. The information contained in edunav can be used for:

- Monitor student's progress and development.
- Follow teaching-learning process.
- Involve parents to education.
- Take care concerns for anything.

The homeroom teacher will share IDs and passwords for parent and student respectively.

2. Pribadi LMS (Learning Management System)

The subject materials in this platform have been compiled by each teacher who teaches subjects according to the annual plan. The contents of this application include:

- Explanation of concepts in text and image formats
- Virtual teaching presented by teachers (recorded)
- Animated simulation
- Embedded applications, games and interactive videos
- Unit test



Pribadi LMS
(Learning Management System)

Pribadi LMS is a semi synchronous online learning platform (online communication in a semi/indirect mode), so it is expected that the data load used will not be too large.

The homeroom teacher will share IDs and passwords for each student. The duration of this learning session is 60 minutes. Every student must access this application in accordance with the lesson schedule that has been prepared. The presence and active role of students during the learning process will be monitored in real time by the subject teacher. The presence of students will be input into edunav.

Information regarding how to access the Pribadi LMS for students can be learned through video tutorials prepared by the school.

Pribadi LMS
(Learning Management System)



Complementary Applications

To enrich and support online learning systems, several applications are embedded into Pribadi LMS including:

1. Zoom

Zoom meeting is a video- and audio- conferencing and screen-sharing tool that allows the teacher to teach remotely. Before starting, the homeroom teacher will share a zoom link to join this session to the students.

2. Pear deck

Pear Deck is an interactive presentation tool used to actively engage students in individual and social learning. Teachers create presentations using their Google Drive account. Students log into the presentation with unique access codes and interact with questions while teachers monitor student and whole-class progress.

3. Online multimedia, game and quiz platforms

Multimedia, game and quiz using online platforms are implemented in learning in addition to increasing enthusiasm of the students in learning as well as to increase students' competitive spirit.

 **Mentimeter**

 **Khan Academy**

Kahoot!



edpuzzle

GeoGebra



Pear Deck

Quizlet

YouTube


QUIZZZ

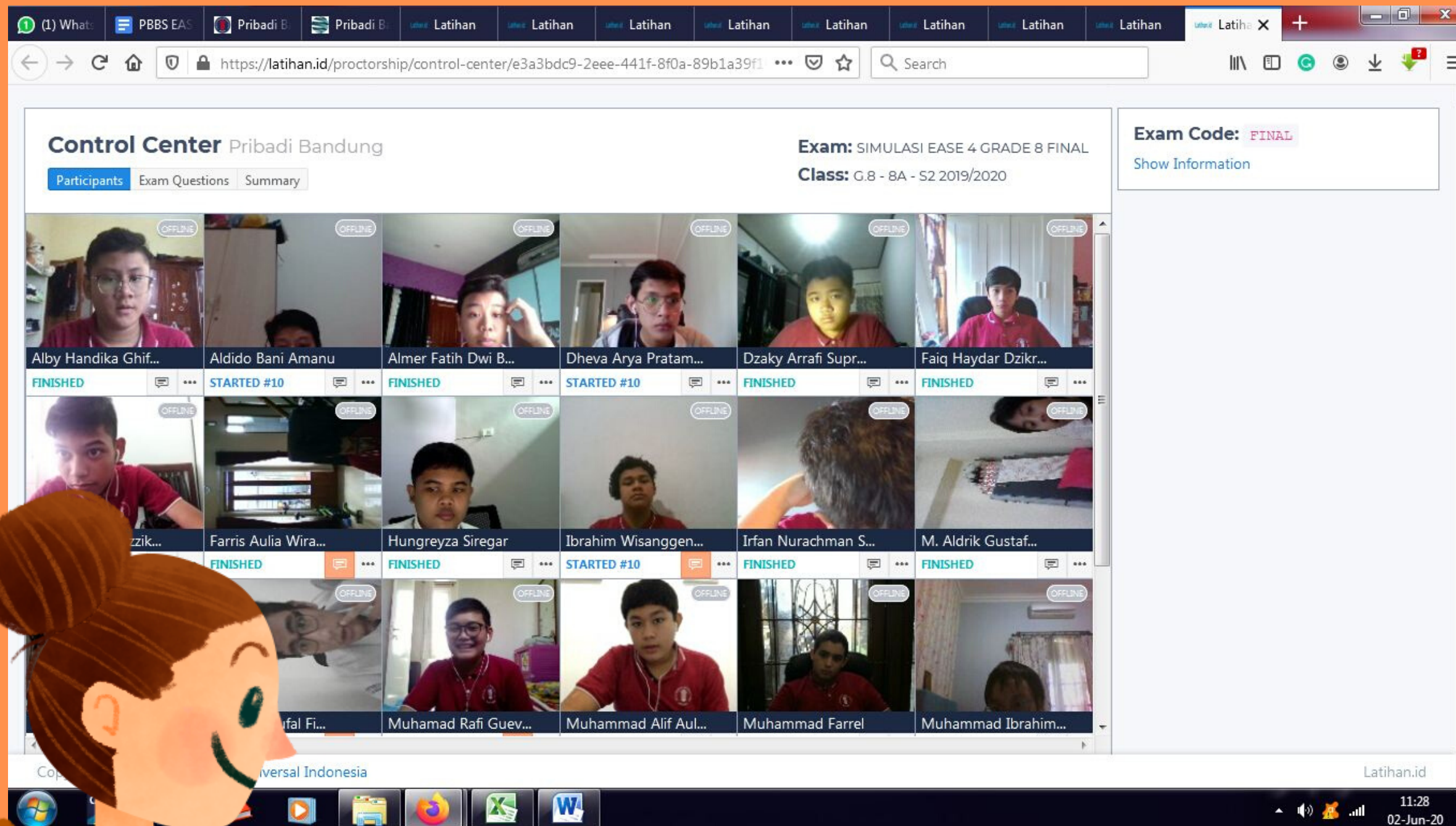
Pribadi LMS
(Learning Management System)



3. Latihan.id

Latihan.id is an online platform for midterm and final examinations. The use of this platform aims to make students prepare for the exam well.

In order to maintain the integrity, validity, and reliability of the exam, the invigilators supervise the exam through a webcam application that is integrated with the Latihan.id platform.



Latihan.id

The Schedule

Here is the weekly schedule

Period	Time	Monday	Tuesday	Wednesday	Thursday	Time	Friday	Saturday
0	08.00-08.30	Virtual Flag Raising Ceremony	Literation Program	Morning Assembly	BTQ and OSIS Program	08.00-08.30	Morning Workout	Extra Lessons (if needed)
	08.30-08.45	Break				08.30-08.45		
1	08.45-09.35	1 st Lesson	1 st Lesson	1 st Lesson	1 st Lesson	08.45-09.35	1 st Lesson	
	09.35-09.45	Break				09.35-09.45		
2	09.45-10.35	2 nd Lesson	2 nd Lesson	2 nd Lesson	2 nd Lesson	09.45-10.35	2 nd Lesson	
	10.35-10.45	Break				10.35-10.45		
3	10.45-11.35	3 rd Lesson	3 rd Lesson	3 rd Lesson	3 rd Lesson	10.45-11.35	3 rd Lesson	
	11.35-12.35	Break				11.35-13.00	Friday Prayer (for Moslem)	
4	12.35-13.25	4 th Lesson	4 th Lesson	4 th Lesson	4 th Lesson	13.00-13.50	4 th Lesson	

The duration of each learning period is 50 minutes consisting of:

- 20 minutes of virtual live, video-based sessions between teacher and the students.
- 30 minutes of semi synchronous online learning through Pribadi learning management system.



Minimum System Requirement

- PC Desktop/Laptop/Chromebook
- The newest versions of web browser
- Webcam



Code of Conduct

1. The students must be ready at least 5 minutes before the lesson begins.
2. The Students must dress neatly and politely during online learning activities.
3. The lighting in the room must be bright enough to be considered “daylight” quality. Overhead lighting is preferred. If overhead lighting is not available, the source of light must not be located behind the students.
4. Students must sit at a clean desk or table. The students are not allowed to study on the bed.



Having technical problems when learning online?

Contact us
0811 249 2111
office hour 08.00 – 14.30 WIB

