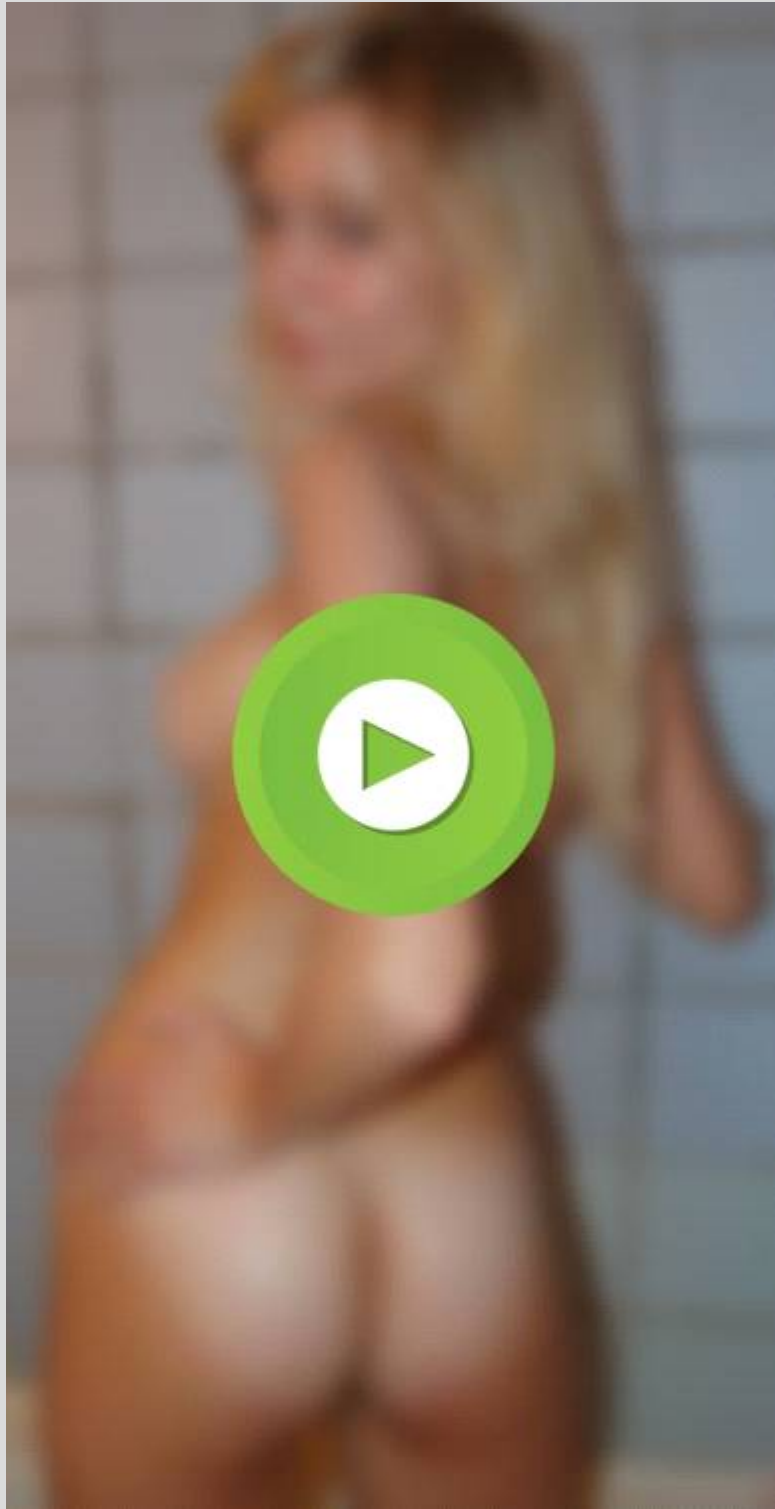


***{CKKD}* pulse dating NEW #cuto**

[Updated : | Monday 2,September | 9 hours : 5 minutes : 45 seconds Ago]



To prep for the event, download the app at .pulse.dating. This event is sponsored by Pulse Dating, the only dating app for safely making real-time connection at live events and locations. To help maximise the chances of meeting the right person for you, Pulse 2 Dating is part of a shared romance network of members and sites. This means that by joining Pulse 2 Dating you automatically get access to members who are part of this shared network, who may have alternative interests, characteristics and lifestyle choices, significantly increasing the chances of finding what you're looking for. Caution must be exercised when dating an elevated sample since the pulse is double valued. Placing a sample on the ascending or descending side of the pulse can often be accomplished if other information is available. The precision of bomb-pulse dating depends on the ability to measure the ^{14}C 7 minutes ago 0183 32 Dating helps check your compatibility, confirm your feelings, and test your partner's love for you. And when you feel your life and personality are in sync with your partner, you are set for ... Pulse .

Written with the dater in mind. Dating tips, advice and ideas from our dating expert and editor, Hayley Matthews and her team. 5.3k followers 1.2k followers. 7 1 21. Bomb-pulse dating has been applied to a range of forensic investigations, including estimating the year of birth and or date of death for human skeletal remains e.g. Wild et al. Reference Wild, Arlamovsky, Golser, Kutschera, Priller, Puchegger, Rom, Steier and Vycudilik 2000 Spalding et al. Reference Spalding, Buchholz, Bergman and Druid 2005 Cook et al. Reference Cook, Ainscough and Dunbar Relationship. heartbeatdating - January 12, 2021 0. Secret love may seem exciting. But if you're dating someone who wants a secret relationship, you need to ask yourself why they want to keep it So in bomb pulse dating it is the relative amount of ^{14}C in the atmosphere that is decreasing and not the amount of ^{14}C in a dead organisms, as is the case in classical radiocarbon dating . This decrease in atmospheric ^{14}C can be measured in cells and tissues and has permitted scientists to determine the age of individual cells and of deceased people.