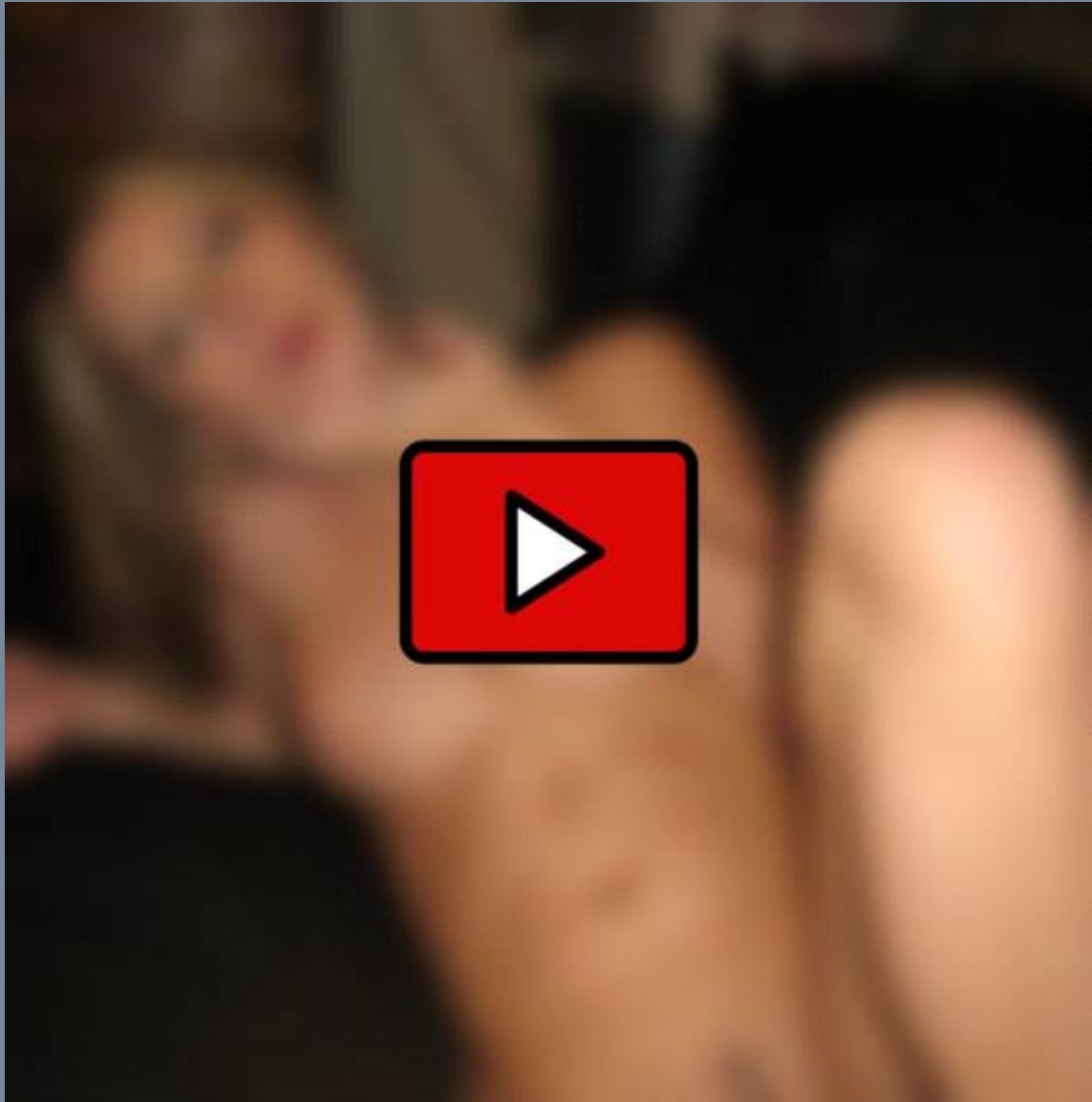


**\*{lo3Bv}\* carbon dating NEW #m0Obt**  
**[Updated : | Monday 2,May | 5 hours : 21 minutes : 33 seconds Ago]**



What is Carbon Dating Carbon is one of the chemical elements. Along with hydrogen, nitrogen, oxygen, phosphorus, and sulfur, carbon is a building block of biochemical molecules ranging from fats, proteins, and carbohydrates to active substances such as hormones. All carbon 12.09.2017 0183 32 Carbon dating is one of the archaeology s mainstream methods for dating organic objects up to 50,000 years old. This method is based on the idea of radiative decay of Carbon-14 isotopes over thousands of years. Through physics, scientists have discovered that radioactive molecules decay at a specific rate dependent on the atomic number and mass of ... Carbon dating, or radiocarbon dating, is a method used to date materials that once exchanged carbon dioxide with the atmosphere. In other words, things that were living. In the late 1940s, an... To discuss your immediate needs and how CarbonDating can help, call MICHAEL O CONNELL at 708 268-7332 or by e-mail at MOCONNELL CARBON-DATING .NET. CarbonDating is a service of MPOChicago Management LLC. Click here to learn more about its full array of service offerings. A few examples of wild dates by radiometric dating Shells from living snails were carbon dated as being 27,000 years old. 3 Living mollusk shells were dated up to 2,300 years old. 4 A freshly killed seal was carbon dated as having died 1,300 years ago. 5 One part of the Vollosovitch mammoth carbon ... 03.10.2000 0183 32 Carbon-14 dating is a way of determining the age of certain archeological artifacts of a biological origin up to about 50,000 years old. It is used in dating things such as bone, cloth, wood and plant fibers that were created in the relatively recent past by human activities. 13.09.2020 0183 32 The process of carbon 14 dating was discovered by American chemist Willard Libby, a professor at the University of Chicago. Carbon 14 dating, consequently, changed the world of archaeology. Dating objects became relatively easy, although doing it precisely still takes some care. The rings of a tree can be used to calculate the age of a dead tree.